

TICKS



What are they?

Ticks are small, spider-like creatures that feed on the blood of mammals such as deer, sheep, dogs and humans.

Where are they?

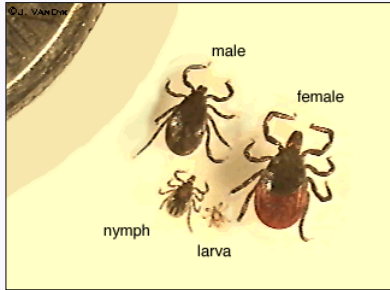
They are found in long grass, the undergrowth and heather.

What happens?

The bite is usually painless and if left, ticks remain attached and feeding for up to three days before dropping off.

Why important?

Some ticks carry bacteria in their gut which can cause infections like Lyme Disease.



TICK LIST

- Give dogs repellent & collars before visiting the outdoors.
- Wear light-coloured clothing and avoid sandals/shorts.
- Pack a tick remover tool or tweezers and follow instructions carefully.
- Ensure everyone checks themselves thoroughly at the end of the day.
- Know the symptoms of Lyme Disease and if suspected, speak to a doctor immediately.

For further information please contact:

The Great Glen Way Rangers

Auchterawe, Fort Augustus, PH23 4BT 01320 366633

www.greatglenway.com

greatglenway@highland.gov.uk